

Installation Instructions

BasicZ Aluminium Stair Edgings

Data Sheet: Page 1 of 6 AH/NF 28.03.22

Introduction

The following installation instructions provide details about how to install BasicZ stair edgings using Gradus Grip (adhesive only) or via a combination of mechanical and adhesive fixing.

Gradus Grip (Adhesive Only Fixing) - BasicZ Aluminium Stair Edgings.....[page 2](#)

Mechanical & Adhesive Fixing - BasicZ Aluminium Stair Edgings.....[page 5](#)

NOTE

It is the installer's responsibility to choose the most appropriate method.
Failure to adhere to the correction installation method provided may void the product's warranty.

Installation Instructions – Gradus Grip (Adhesive Only Fixing)

BasicZ Aluminium Stair Edgings

Data Sheet: Page 2 of 6 AH/NF 28.03.22

These installation guidelines apply to the following Gradus profiles:

BSXR1 ▲, BSXR13 ▲, BSXR2 ▲, BSXR23 ▲, BSXR3 ▲, BSXS1, BSXS2, BSXS3, BSXH1, BSXH2 and BSXH3.

- NOTE** ▲ Ramp back profiles (BSXR1, BSXR13, BSXR2, BSXR23 and BSXR3) can be installed directly on to the substrate where floorcoverings are not used.
When used with resilient or hard flooring, ramp profiles should be installed on top of the floorcovering and suitable mechanical fixings* should also be used in addition to Gradus Grip.
- When fixing ramp back profiles on top of vinyl or other non-absorbent flooring, adhesive application instructions for a non-absorbent surface should be followed (see page 3).
Ramp back profiles must NOT be installed on top of any type of textile floorcovering. (*see mechanical and adhesive fixing instructions for further information).
- Profiles other than ramp-back profiles should be installed directly onto the substrate and NOT on top of any floor covering.
The floorcovering should be abutted up to the back edge of the profile.

Installation

1. Surface Preparation

Prior to application ensure that all surfaces are smooth, sound, clean and free of laitance, dust and contamination. If a levelling compound or repair mortar is required ensure that the manufacturer's instructions are followed to ensure the material is ready to provide a strong surface. The product to be adhered should also be clean and free from contamination such as oil, grease etc. that may impair adhesion.

Suitable Substrates: *	Non-suitable Substrates:
Electroplated Metal	Weak, friable, dusty concrete/ screed etc.
Concrete / Powerfloat	Asphalt / Bitumen
Floor Smoothing Compounds	Polyethylene / Polypropylene
Repair Mortars (Cement and Epoxy)	Oil / grease contaminated surfaces
Terrazzo / Marble / Ceramics / Engineering Brick	
Fibre Glass	
Plywood / OSB / Chipboard / MDF / Wood	
Plaster / Plaster Board	
Paint/ Epoxy / PU Coatings and Screeds	

***This table is a guide only and you may encounter different substrates and other factors that will affect the suitability such as undulations, flaking paint or weak plaster**

- The riser material should be installed prior to fitting the profile and should be cut to finish flush or slightly short of the tread.
- Cut the profile to the size required.

Installation Instructions – Gradus Grip (Adhesive Only Fixing)

BasicZ Aluminium Stair Edgings

Data Sheet: Page 3 of 6 AH/NF 28.03.22

4. Gradus Grip Application.

The adhesive should be applied in straight lines (see page 4 – Precautions), parallel to the stair edging, by means of a suitable applicator gun. Fix nozzle and cut the aperture to the required width dependant on application. Apply the adhesive to one surface only and then press the two surfaces together within the open time of the adhesive. The high initial grab and rapid strength gain will generally mean that no mechanical fixings are required.

a. Absorbent Surfaces:

Single Channel stair edgings - apply the adhesive to the underside of the stair edging in 5mm wide linear beads beginning 5mm in from the back edge of the profile. Apply a second bead in the centre of the profile. See Fig.1

Single wide channel stair edgings (with 73.5mm tread size or greater) – As per single channel stair edgings with the addition of a third bead of adhesive approximately 10mm from the front edge. See Fig.2

FIG. 1

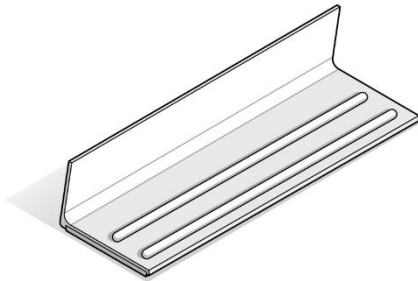
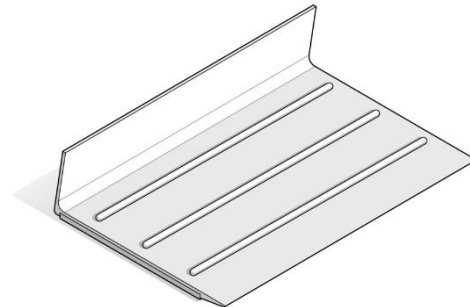


FIG. 2



b. Non-Absorbent Surfaces:

When bonding stair edgings to metal substrates or other suitably smooth non-absorbent surfaces first dampen or mist the area with water. Do not leave standing water on the surface. In addition, mist the stair edging with water before applying adhesive as described below. This method will accelerate the cure time of the adhesive and allow the area to be opened after a minimum of 2 hours, however the bond strength should be checked to ensure it is safe to open.

Single channel stair edgings - Apply the adhesive to the underside of the stair edging in 3mm wide linear beads beginning 5mm in from the back edge of the profile. A second bead should be applied 10mm from the front edge of the profile and a third bead in the centre of the profile. See Fig.3

Single wide channel stair edgings (with 73.5mm tread size or greater) – Apply the adhesive to the underside of the stair edging in 3mm wide linear beads beginning 5mm in from the back edge of the profile. A second bead should be applied 10mm from the front edge of the profile with an additional 2 beads of adhesive applied equidistant between the inner and outer beads. See Fig.4

FIG. 3

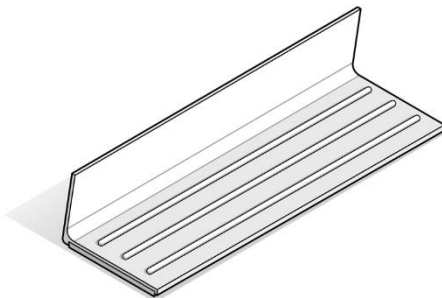
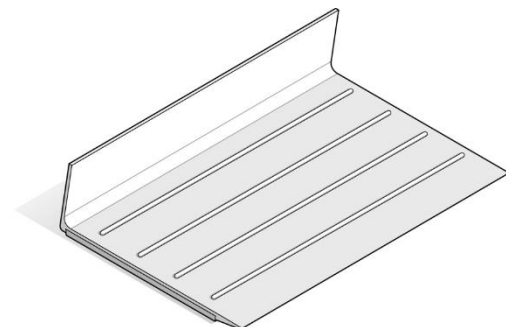


FIG. 4



Installation Instructions – Gradus Grip (Adhesive Only Fixing)

BasicZ Aluminium Stair Edgings

Data Sheet: Page 4 of 6 AH/NF 28.03.22

5. Place the stair edging so that the leading edge is overlapping the edge of the step and press down whilst sliding the profile into place. Press down firmly to ensure a full bond.
6. Fit chosen covering to the tread ensuring the stair edging remains in place whilst the tread material is installed.
7. Cure time:
 - a. **Absorbent Surfaces:**
Allow approximately 1 hour after fixing before opening the area to traffic. The installation should be checked to ensure the bond is sufficiently secure before opening the area. For beads greater than 5mm in thickness the cure time will be extended.
 - b. **Non-Absorbent Surfaces:**
Allow a minimum of 2 hours after fixing before opening the area to traffic. The installation should be checked to ensure the bond is sufficiently secure before opening the area. For beads greater than 5mm in thickness or when bonding non-absorbent surfaces that are not suitably dampened the cure time will be extended.
8. Remove any excess wet adhesive from surfaces with a suitable proprietary wipe.

Precautions

- Temperature – adhesive must be applied onto substrates which are above 5 degrees centigrade and remain so whilst curing takes place.
- Do not snake / zig-zag the adhesive beads, as this can significantly reduce bond strength – always apply in straight (linear) beads.
- Thicker beads take longer to cure, however always ensure sufficient material is applied relative to the installation being undertaken.
- Stair edgings must not be disturbed or moved during the curing period of the adhesive.
- Where stair edgings are installed without additional mechanical fixing, always check the bond is secure before opening the area to traffic.

Installation Instructions – Mechanical & Adhesive Fixing

BasicZ Aluminium Stair Edgings

Data Sheet: Page 5 of 6 AH/NF 28.03.22

These installation guidelines apply to the following Gradus profiles:

BSXR1 ▲, BSXR13 ▲, BSXR2 ▲, BSXR23 ▲, BSXR3 ▲, BSXS1, BSXS2, BSXS3, BSXH1, BSXH2 and BSXH3.

- NOTE** ▲ Ramp back profiles (BSXR1, BSXR13, BSXR2, BSXR23 and BSXR3) can be installed directly on to the substrate where floorcoverings are not used.
When used with resilient or hard flooring, ramp profiles should be installed on top of the floorcovering. When fixing on top of vinyl or other non-absorbent floorcovering, specialist advice should be sought over application of adhesive.
Contact the relevant adhesive manufacturer for further information. Ramp back profiles must **NOT** be installed on top of any type of textile floorcovering.
- Profiles other than ramp-back profiles should be installed directly onto the substrate and **NOT** on top of any floorcovering.
The floorcovering should be abutted up to the back edge of the profile.

Installation

1. It should be ensured that all surfaces to which the profile is to be fixed are sound, dry, flat and free from any contaminants.
2. The riser material should be installed prior to fitting the profile and should be cut to finish flush or slightly short of the tread.
3. Cut the profile to the size required.
4. Place the profile in position and mark the position of the screw holes onto the substrate.
NOTE: Steel treads can be fixed using self-tapping countersunk steel screws, or if access to the underside of the tread can be gained, then the profile can be fixed using countersunk steel bolts, washers and locking nuts. Where there is risk of the tips of the screws or bolts being a danger, then these should be trimmed back on the underside of the metal tread.
5. Pilot drill (for timber) or drill the substrate to a depth of 30 - 35mm and insert suitable fixing plugs into the holes.
6. Apply cartridge adhesive (in accordance with manufacturer's instructions) to the underside of the profile.
7. Using countersunk steel screws, fix through the profile into the plugs and tighten (see fixings guidance below).
8. Once installed, place the matching plugs into the insert to cover the fixed screw heads.
9. Fit chosen covering to the tread.

Installation Instructions – Mechanical & Adhesive Fixing

BasicZ Aluminium Stair Edgings

Data Sheet: Page 6 of 6 AH/NF 28.03.22

Recommended adhesive products for BasicZ Stair Edgings

Gradus Limited provides this information only as guidance and the legal responsibility for the supply and performance of the adhesives listed below shall remain the sole responsibility of the relevant manufacturer.

By providing this information, Gradus Limited does not imply any equivalents between each of the different manufacturer's products, or that other products would prove unsatisfactory. However, use of adhesives not recommended by Gradus should be supported by a guarantee from the adhesive supplier.

Application of the named adhesive must be actioned in strict accordance with the relevant manufacturer's instructions.

If you have any queries regarding adhesives, please contact the adhesive manufacturer directly.

Manufacturer	Product Reference	Contact Number	Website
Gradus	Gradus Grip GG290	+44 (0) 1625 428922	www.gradus.com
F. Ball and Co. Ltd	Stycco Flex	+44 (0) 1538 361 633	www.f-ball.co.uk
Tremco	SP060 / MT440	+44 (0) 1942 251 400	www.tremco-illbruck.co.uk
UZIN	MS Structural	+44 (0) 1788 530 080	www.uzin.co.uk

Fixings Guidance

Size of screw	BasicZ item code
No.6	BSXR1 BSXR13 BSXR2 BSXR23 BSXR3 BSXS1 BSXS2 BSXS3
No.8	BSXH1 BSXH2 BSXH3